



HOTEL BOOKING FORM

MUSICMATTERS

THE ASIA PACIFIC MUSIC FORUM 3-5 JUNE 2008, GRAND HYATT, HONG KONG

Please complete the hotel room booking form and fax to: +852 2167 8168 or email suki.ho@brandedasia.com

1. DELEGATE INFORMATION

Salutation:

First Name:

Last Name:

Email Address:

Company:

Passport Number:

Credit Card Number:

Visa

Master

Amex

Expiry Date:

Arrival Time / Flight No:

Departure Time / Flight No:

EXECUTIVE CLUB LEVEL, Grand Club Access*

* Additional charge applies

2. GRAND HYATT HOTEL BOOKING

All delegates who book a hotel room through Music Matters are offered preferential discount rates at the Grand Hyatt Hotel (subject to availability). Booking should be made prior to the 15th April 2008. Discounted rooms are limited and subject to availability. All Grand Rooms have been allocated but some Grand Harbour View rooms are still available - they will be allocated on a first-come, first-served basis. Government tax and service charges apply. You will receive a confirmation of your booking from the Grand Hyatt, Hong Kong. To be eligible for the preferential rate you must book through Music Matters and not directly with the hotel. Payment will be made directly to the hotel.

Date	Price per person, USD* Grand Room	Price per person, USD* Grand Harbour View
Tuesday, 3rd June 2008	SOLD	HKD3,000 (USD385*) + 13%
Wednesday, 4th June 2008	SOLD	HKD3,000 (USD385*) + 13%
Thursday, 5th June 2008	SOLD	HKD3,000 (USD385*) + 13%
Extra night(s)**	Dates:	SOLD
SUB TOTAL:		HKD3,000 (USD385*) + 13%

** Please indicate which night(s)

*The rates in USD are based on an exchange rate of 7.8 and therefore may be subject to change.

Check-in Time: 14:00

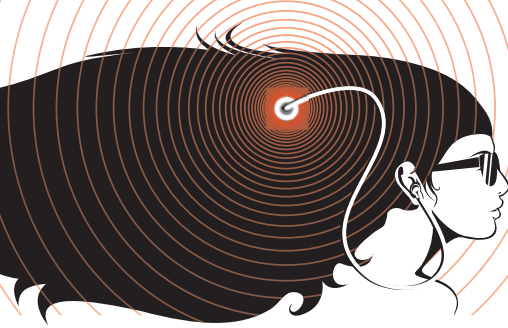
Check-out Time: 12:00 noon (charges may apply for late check-out please contact the hotel directly following your booking confirmation to arrange this).

3. CANCELLATION POLICY

An administration fee of USD100 will be applied to cancellations received on or prior to April 31st 2008. Full payment will be due for cancellations received after this date.

SIGNATURE: _____ DATE: _____

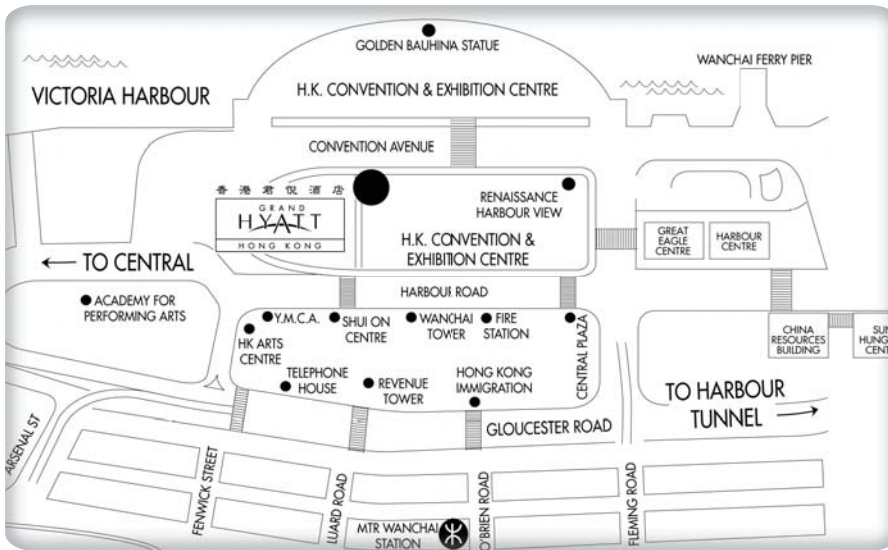




Transfers from Hong Kong International Airport (Chek Lap Kok)

Limousine	Taxi	Hotelink (Airport - Hotel Coach H2)	Airport Express Line (Rail)
<ul style="list-style-type: none"> Time - 40 minutes Operating hours - closes 30 minutes after last flight Frequency - upon request Charges - HK\$780 (approximately US\$100) Where to meet the limousine: After customs, approach the Hyatt Limousine Desk located in front of exit A in the arrivals hall. 	<ul style="list-style-type: none"> Time - 40 minutes Operating hours - 24 hours Charges - approximately HK\$350 (US\$45) including tolls, excluding levy for luggage and traffic Reservations - go to taxi stand 	<ul style="list-style-type: none"> Time - 60 to 75 minutes Operating hours - 6:15 am to 12:30 am Frequency - approximately every 30 minutes Charges - HK\$140 (approximately US\$18) per person Reservations - Approach the Airport limousine desk located in front of exit B in the arrivals hall. 	<ul style="list-style-type: none"> Time - 30 minutes to Hong Kong Station in Central Operating hours - 6:00 am to 1:00 am Frequency - approximately every 8 to 12 minutes Charges - HK\$100 (approximately US\$13) per person Reservations - purchase tickets at AEL Station in the airport. Take a five-minute taxi ride from Hong Kong station to the Grand Hyatt.

To arrange limousine transfers please contact the hotel directly.



Hotel Address

1 Harbour Road,
 Hong Kong, People's Republic of China
 Tel: +852 2588 1234
 Fax: +852 2802 0677

Grand Hyatt Hong Kong, the flagship hotel of Hyatt International, is a world-class business hotel, situated on Hong Kong island's prime waterfront. Directly connected to the Hong Kong Convention and Exhibition Centre, the hotel accommodates 549 guestrooms and suites, 25 function rooms, and eight renowned restaurants and bar for exceptional dining and entertainment experience. For recreational enjoyment,

Check-in Time

Hotel rooms are generally available for guest check-in after 2.00pm. Guests arriving prior to this time will be allocated rooms as soon as they become available. For all early check-ins, we strongly recommend that rooms are reserved and paid for the night before in order to guarantee early check-in.

Check-out Time

Check-out time is 12.00 noon. Guests requiring special consideration for late check-out should make their request when placing reservations – charges may apply. Rooms may be extended until 6.00pm at 50% of the group room rate, subject to availability. After 6.00pm rooms will be charged at the full group rate.

Breakfast Charges

Breakfast is available at the Grand Café where American buffet breakfast is served. The buffet breakfast is priced at HK\$245 + 10% service charge per person.

